

Photometric Report

Argos LED panel 60 x 60, 3000K (7 mtr), , Ordercode A0160200

REPORT SUMMARY

Output

Total Lumens: 3752 Lumen
Peak Intensity: 1597 candela
Illuminance @ 5m: 64 lx
CRI: 83,0
CCT: 2986 K

Optical

Beam Angle (50%) 93,4 °
Field Angle (10%) 150,6 °

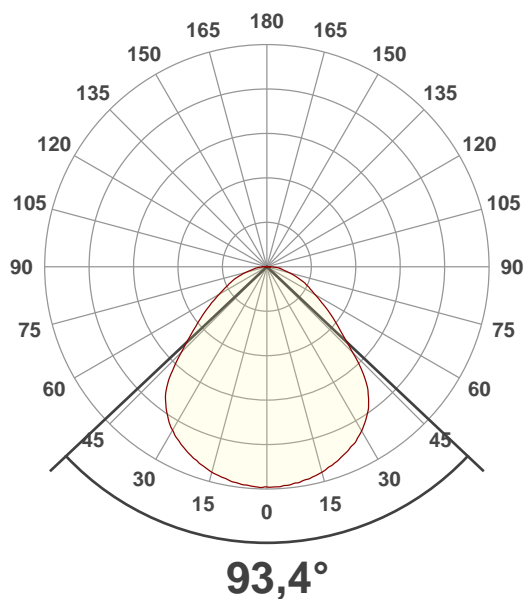
Conditions:

Power Supply: 222 V
Power: 37,1 W
Current: 0,170 A
Power Factor: 0,98

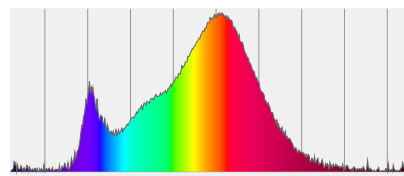


MEASUREMENTS

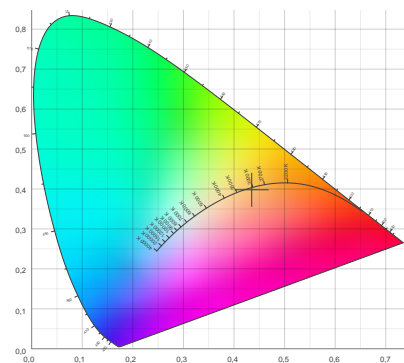
Angular Beam Distribution



Spectral Distribution



CIE 1931

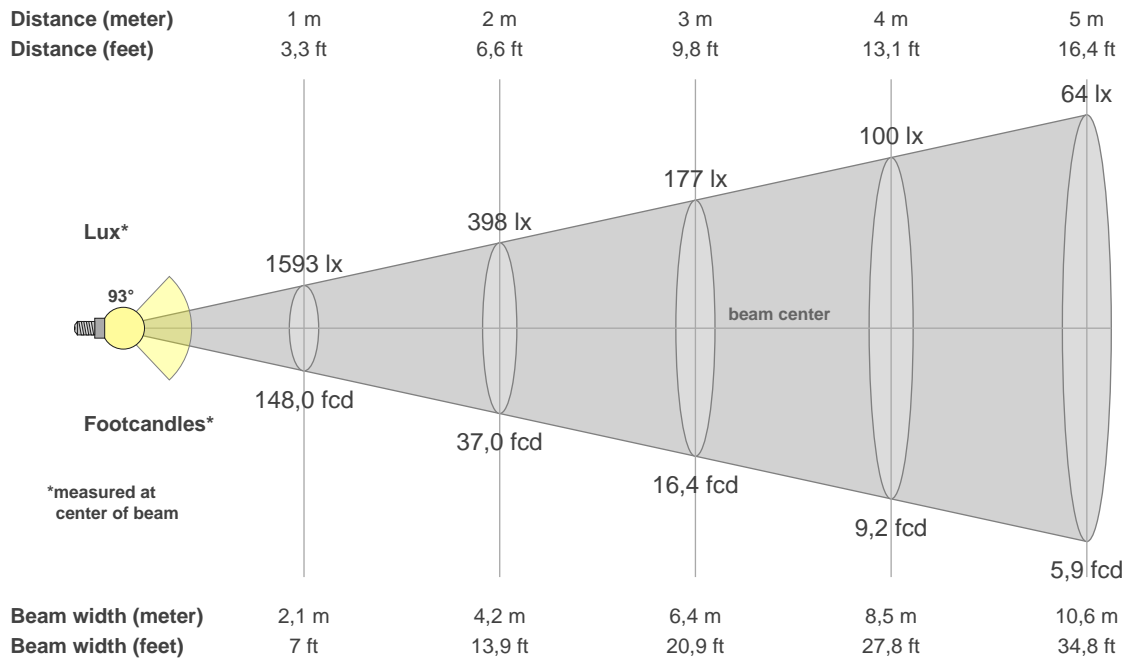


Photometric Report



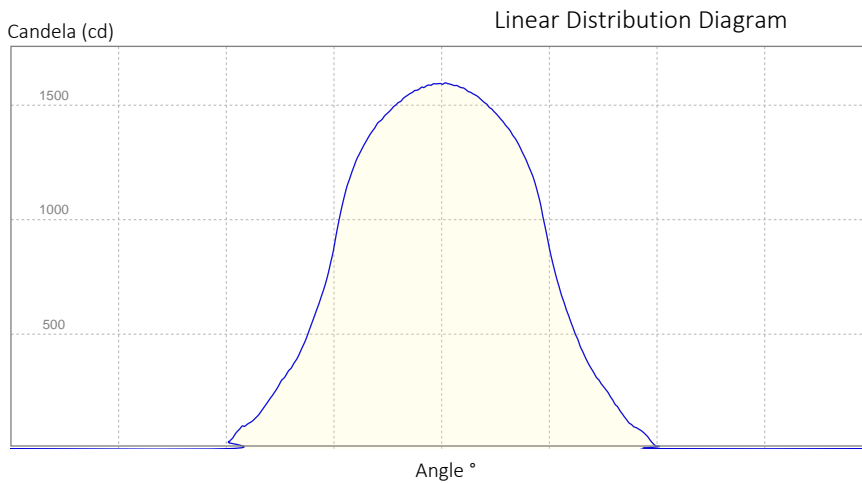
Argos LED panel 60 x 60, 3000K (7 mtr), , Ordercode A0160200

BEAM DETAILS



Beam Illuminances from 1-20m

1m	2m	3m	4m	5m	6m	7m	8m	9m	10m	11m	12m	13m	14m	15m	16m	17m	18m	19m	20m
3,3ft	6,6ft	9,8ft	13,1ft	16,4ft	19,7ft	23ft	26,2ft	29,5ft	32,8ft	36,1ft	39,4ft	42,7ft	45,9ft	49,2ft	52,5ft	55,8ft	59,1ft	62,3ft	65,6ft
1593lx	398lx	177lx	100lx	64lx	44lx	33lx	25lx	20lx	16lx	13lx	11lx	9lx	8lx	7lx	6lx	6lx	5lx	4lx	4lx
148fcd	37fcd	16,4fcd	9,2fcd	5,9fcd	4,1fcd	3fcd	2,3fcd	1,8fcd	1,5fcd	1,2fcd	1fcd	0,9fcd	0,8fcd	0,7fcd	0,6fcd	0,5fcd	0,5fcd	0,4fcd	0,4fcd



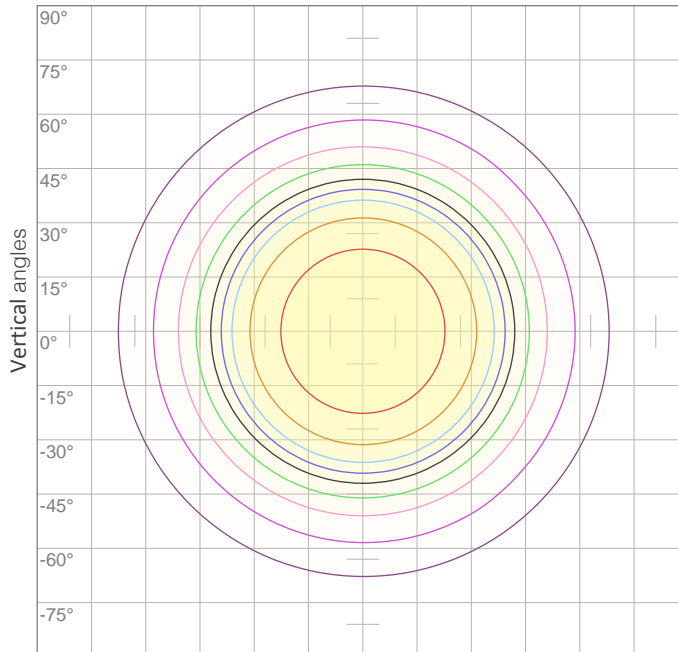
Beam Angle (50%): 93,4 °
 Field Angle (10%): 150,6 °
 Cutoff Angle (3%): 174,9 °

Photometric Report



Argos LED panel 60 x 60, 3000K (7 mtr), , Ordercode A0160200

POLAR DIAGRAMS



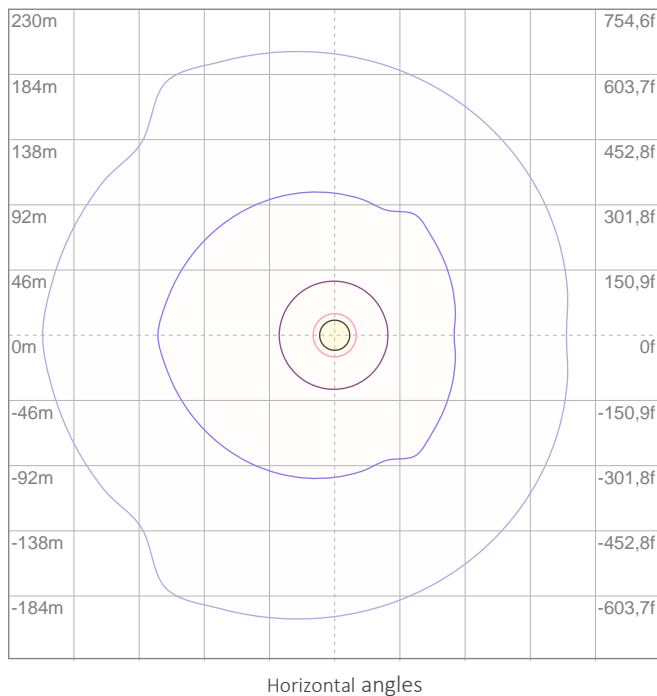
ISO candela diagram

10%	159 cd
20%	319 cd
30%	478 cd
40%	637 cd
50%	796 cd
60%	956 cd
70%	1115 cd

Conditions:

Number of c-planes: {C_PLANES}

Candela at center: 1593 cd



ISO lux diagram

3%	0,478 lx
5%	0,796 lx
10%	1,59 lx
30%	4,78 lx
50%	7,96 lx

Conditions:

Number of c-planes: 2

Lux at center: 15,9 lx

Lux distribution on a surface when lamp is mounted at 10 meters from the surface.

Mounting height: 10 meters (33 feet)

Photometric Report



Argos LED panel 60 x 60, 3000K (7 mtr), , Ordercode A0160200

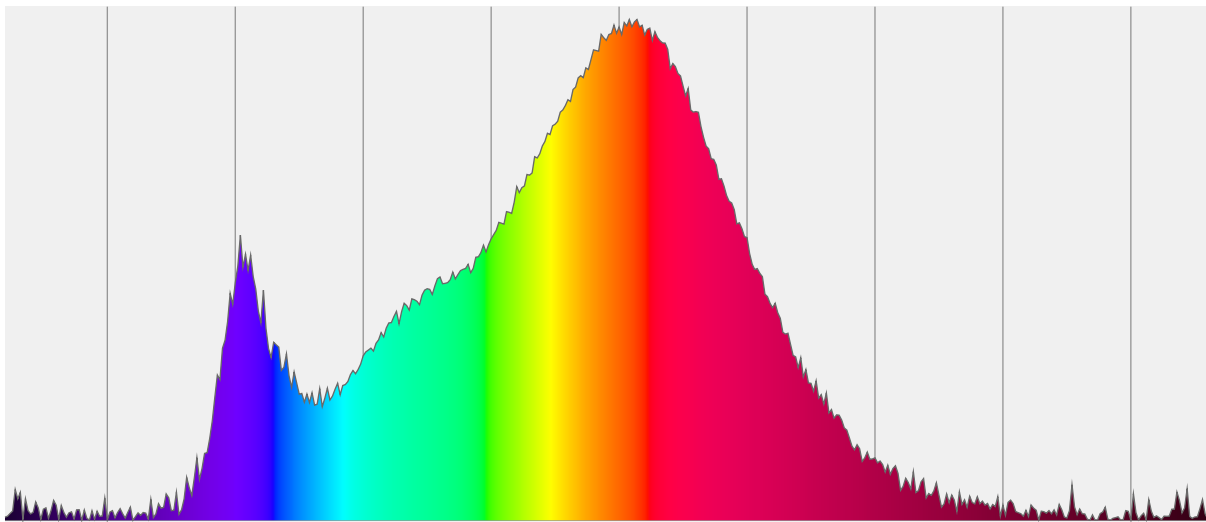
CHROMATICITY REPORT

Total Lumens: 3752 lm
Peak Intensity: 1597 cd
Fixture Efficiency: 101 Lumen/Watt

Color Temperature: 2986 K
CRI: 83,0
CRI R9: 7,5
CQS: 82,2
TM-30 Rf: 85,0
TM-30 Rg: 94,8
 Δuv : -0,0022
1st Dominant Wavelength: 607 nm
2nd Dominant Wavelength: 452 nm



Spectral Distribution



Color

2986 K
CIE 1931 Coordinates:
X: 0,435 Y: 0,398

Color Temperature

2986 K

CRI

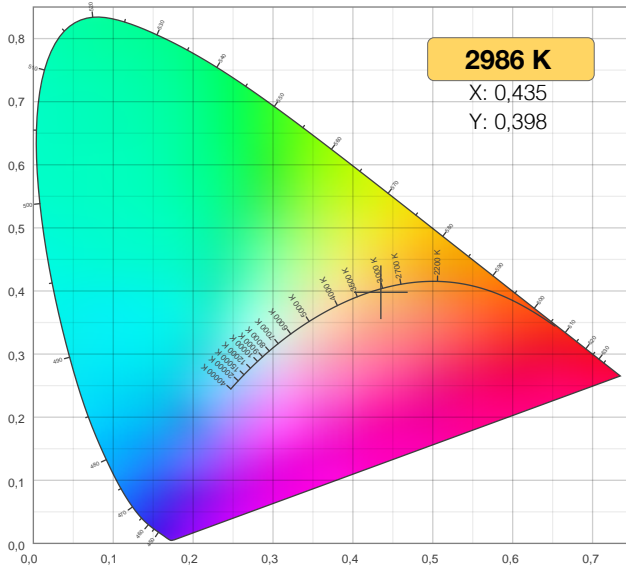
83,0

Photometric Report

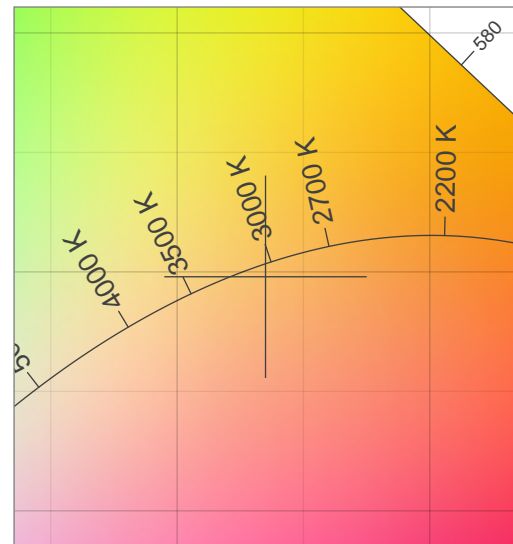
Argos LED panel 60 x 60, 3000K (7 mtr), , Ordercode A0160200

CHROMATICITY

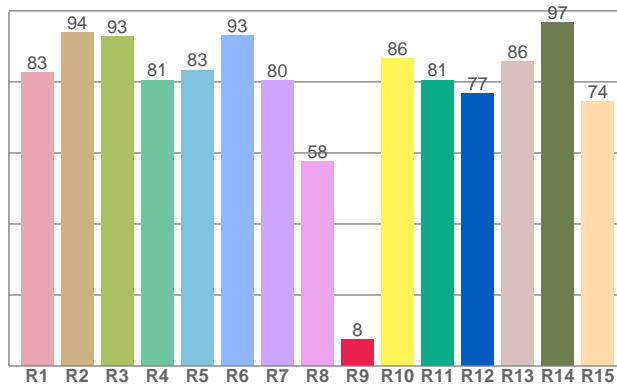
CIE 1931



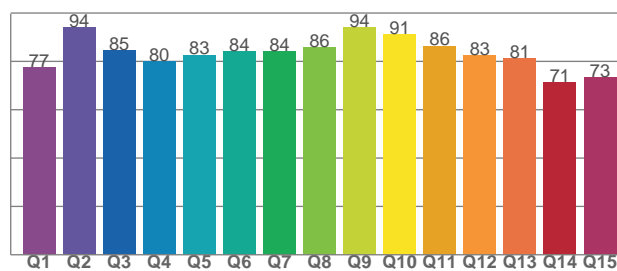
CIE 1931 - Detail



CRI: 83,0 (R1-R8)



CQSI: 82,2



Photometric Report



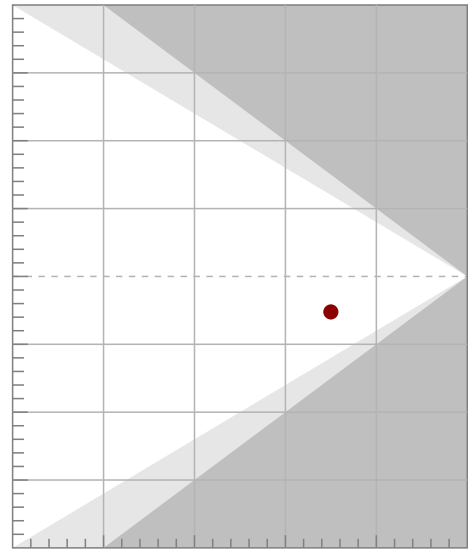
Argos LED panel 60 x 60, 3000K (7 mtr), , Ordercode A0160200

TM-30-18 DETAILS

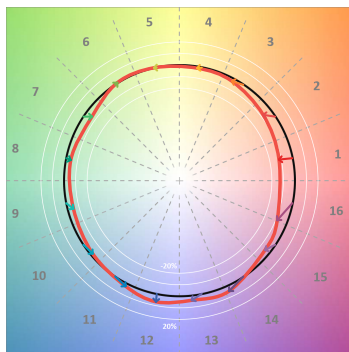
Rf 85,0
Fidelity index Rf

Rg 94,8
Gamut index Rg

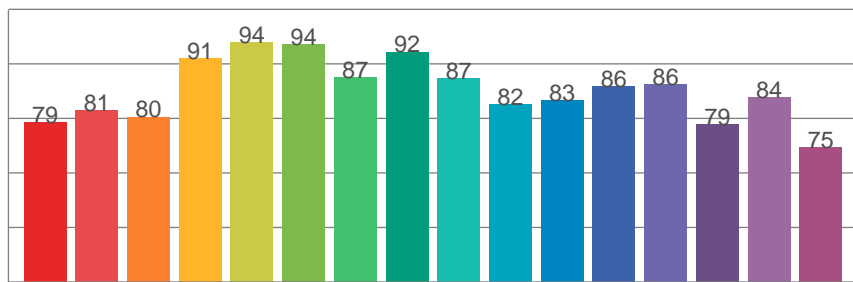
Hue Bin	R _f	Shifts (%)	
		Chroma	Hue
1	79	-12%	1%
2	81	-8%	7%
3	80	-3%	10%
4	91	-1%	4%
5	94	0%	2%
6	94	1%	-3%
7	87	-6%	-4%
8	92	-4%	1%
9	87	-5%	6%
10	82	-2%	11%
11	83	2%	12%
12	86	7%	1%
13	86	4%	-10%
14	79	4%	-17%
15	84	-5%	-9%
16	75	-10%	-17%



TM30-18 Color Vectors



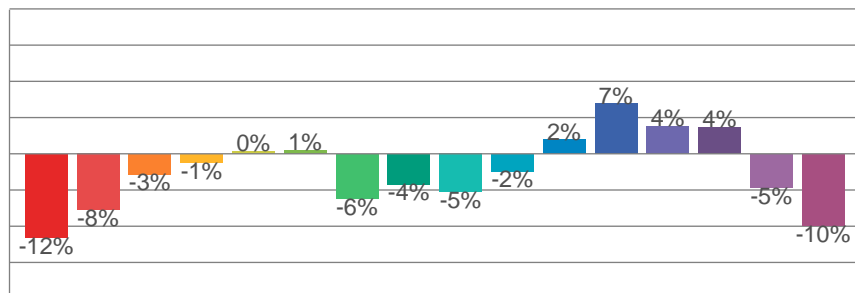
Rf by Hue Bin



TM30 Color Distortion



TM30 Chroma Shift



TM30 Color Fidelity Sample Chart

